

Myfullsize– Instructions For Use

Intended Use

Myfullsize is a non-medical device that can be used to stretch and lengthen the penis.

Myfullsize is designed to be work under clothes and can be used at any time (except when sleeping)

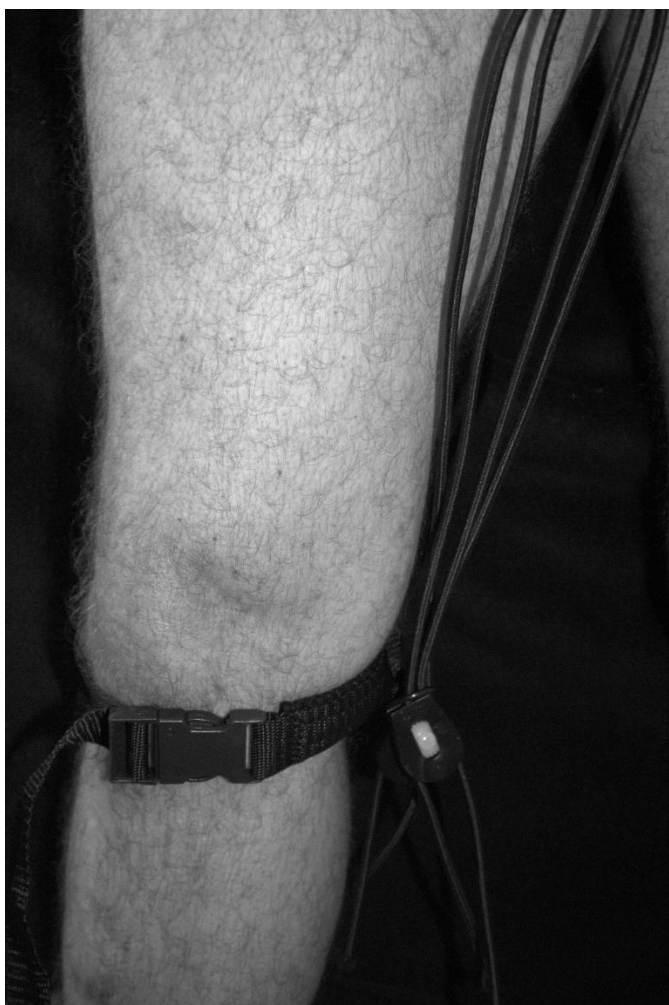
It is non-medical and for recreational use only.

Please consult with a healthcare provider for guidance based on your specific condition.

1. Unpack the Myfullsize from the fabric pouch



2. Use the adjustable strap on the knee band so that it securely fits to your leg. The strap can be placed above or below the knee.



3. Insert your penis into the foam ring up to 1 inch behind the head of your penis. Ensure that the foam ring is in a comfortable position for you.



4. Secure your penis in the foam ring by tying a knot using the two silicone robes. Ensure the knot is not fasten too tightly
5. Use the two pullies to adjust the tension and pull your penis down your leg.



6. Pull the cords with one hand while pulling the cord locks in the opposite direction with your other hand to lock the desired tension.
The shorter the cord length between the foam rig and the wheel locks, the higher the tension.



7. The ends of the cords can be tucked away behind the knee strap.

IMPORTANT: DO NOT ATTEMPT TO PUT MORE TENSION ON YOUR PENIS THAN IS COMFORTABLE.

8. Length of time to wear

Beginner	10-20 minutes for each stretching session for the first two weeks. 3 sessions can be done 5-7 days a week. Take at least 30-minute breaks in between each session and try to space them out during the day. Gradually increase the duration of stretching over the weeks as your penis gets used to tension and stretching.
Expert	1-2 hours per stretching session, 5-7 days per week. We advise that you take at least 30-minute breaks in between sessions.

Warnings

The foam ring should fit snugly and not cause your any pain to your penis. Slight skin discolouration is normal and will disappear within a few minutes after use.

Remove immediately if the skin of your penis turns dark purple/black or if you feel any pain, cold or tingling sensations.

If you feel any discomfort using Myfullsize, stop use immediately

Do not use whilst sleeping

Care for Your Product

It is recommended that you clean the Myfullsize product before and after use, using a damp cloth with soap and water.

Do not use harsh detergents such as bleach which can cause the materials to degrade over time.

Once cleaned, allow to air dry. Pack and store the Myfullsize product in the provided dustbag.

Material Composition

Myfullsize is composed of body-safe materials including silicone.

This product does not contain latex or phthalates